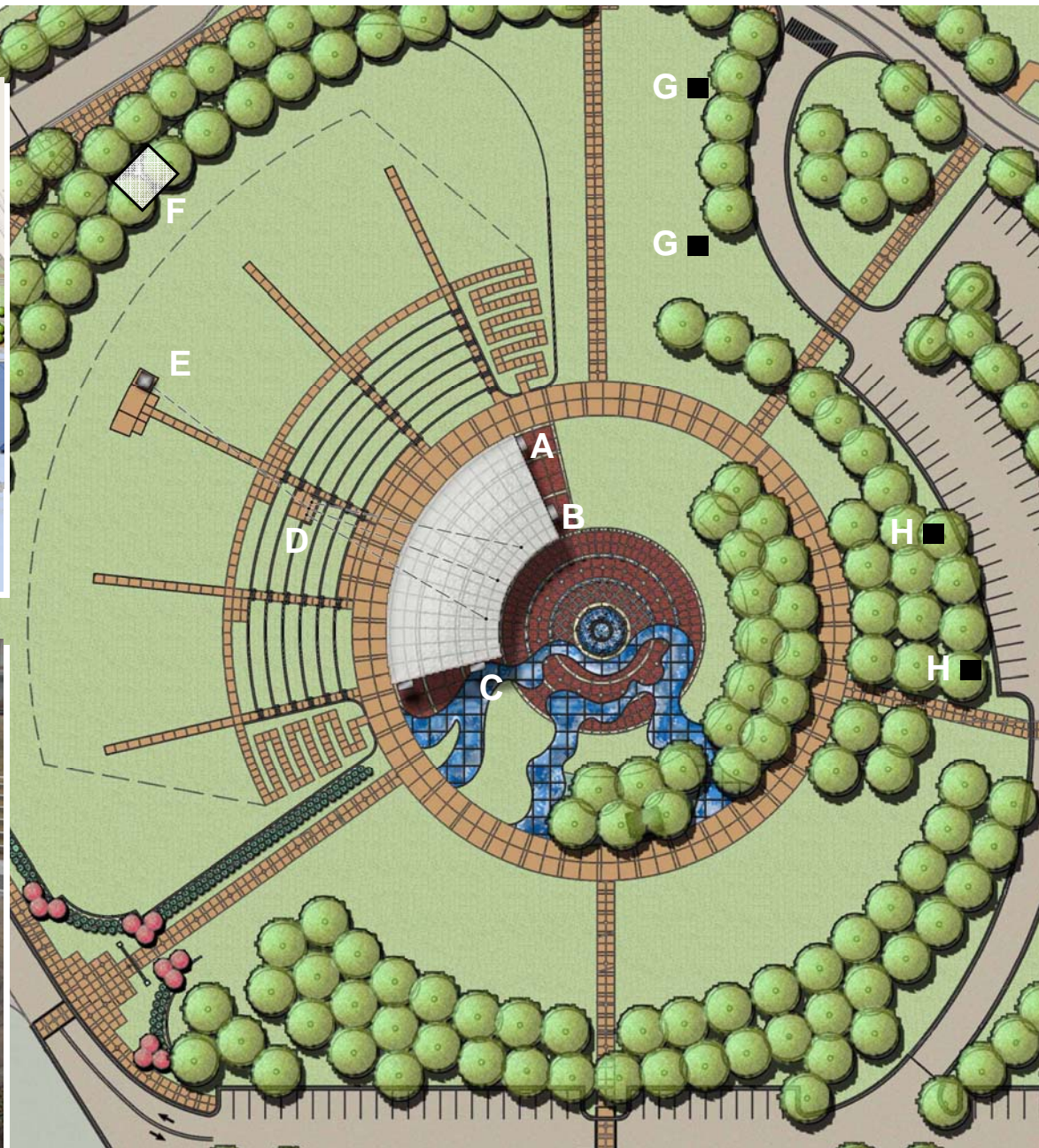
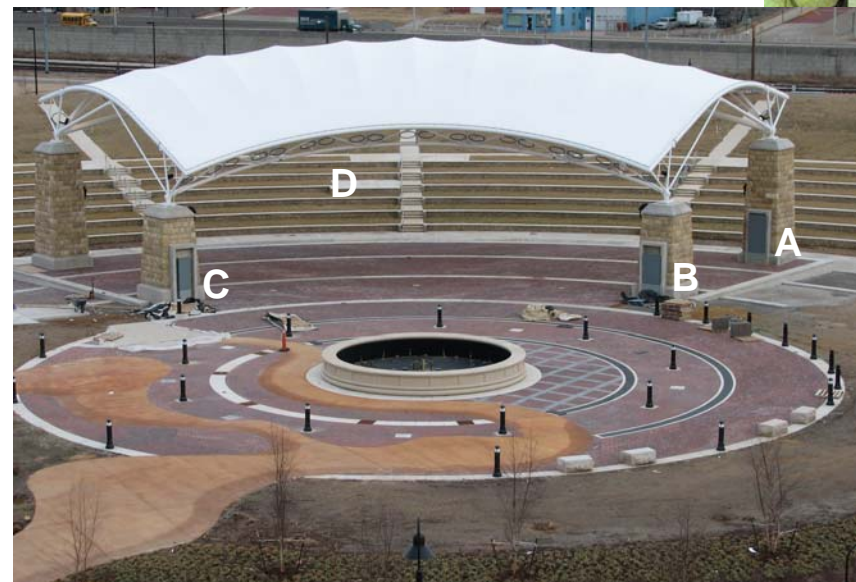


Alton Amphitheater Features



A Electrical Panel @ Pavilion Column: IRF
277/480 Volt
3 Phase
4 Wire
600 Amps

B Electrical Panel @ Pavilion Column: SR
120/208 Volt
3 Phase
4 Wire
600 Amps

C Electrical Panel @ Pavilion Column: SL
120/208 Volt
3 Phase
4 Wire
600 Amps

D Control Pad
1 - Quad Outlet
3 - 6"Ø Empty Conduits to Back Stage
1 - 6"Ø Empty Conduit to Electrical Pad (E)

E Electrical Pad
2 - Quad Outlets
120/208 Volt
277/480 Volt
3 Phase
4 Wire
5 - 20 Amp Circuits Spares

6 - Pole Mounted Emergency/ House Lights

F Electrical Platform (EP)
RV Breakers at Control Panel
Transformer
Emergency Generator
Meter

G RV1 and RV2 Pedestal
20A Duplex
50A - 208V Single Phase - RV Outlet
30A - 120V Single Phase - RV Outlet
Breaker at EP

H RV3 and RV4 - Quasite Box
Wired to Provide 100A Service
Breaker at EP

Standard Outlets at Pavilion
1 - Quad Outlet at Each Column
4 - Quad Outlet on Roof Structure, plus
2 - Duplex Outlets @ Front of Roof Structure

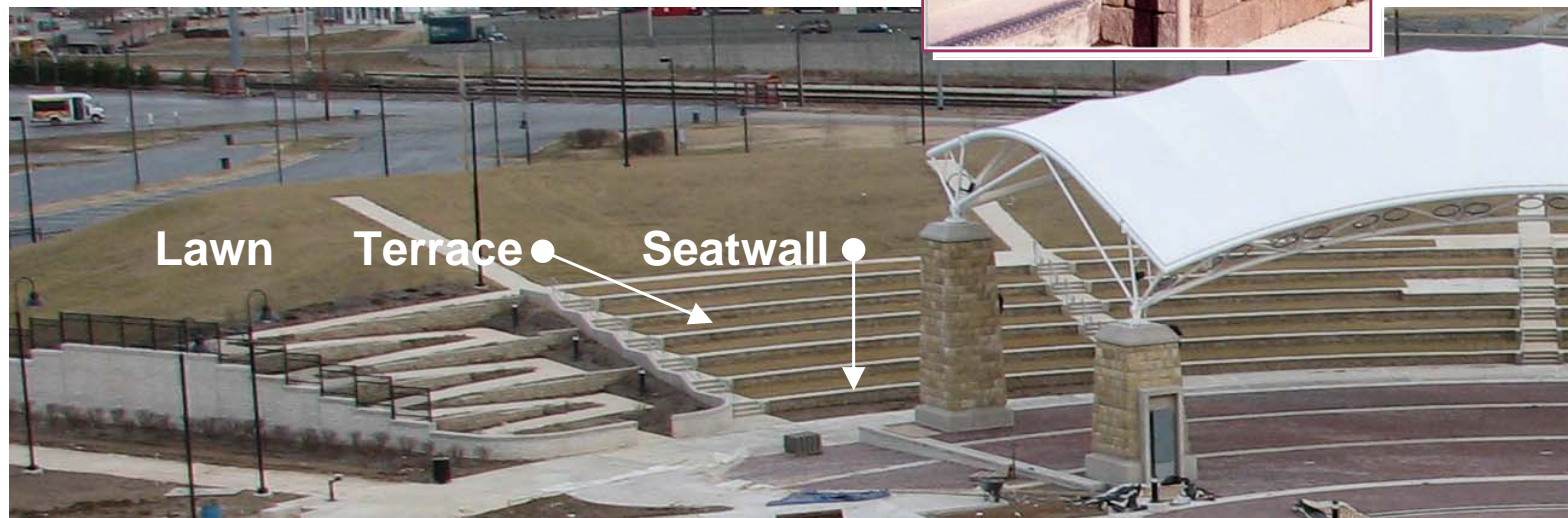
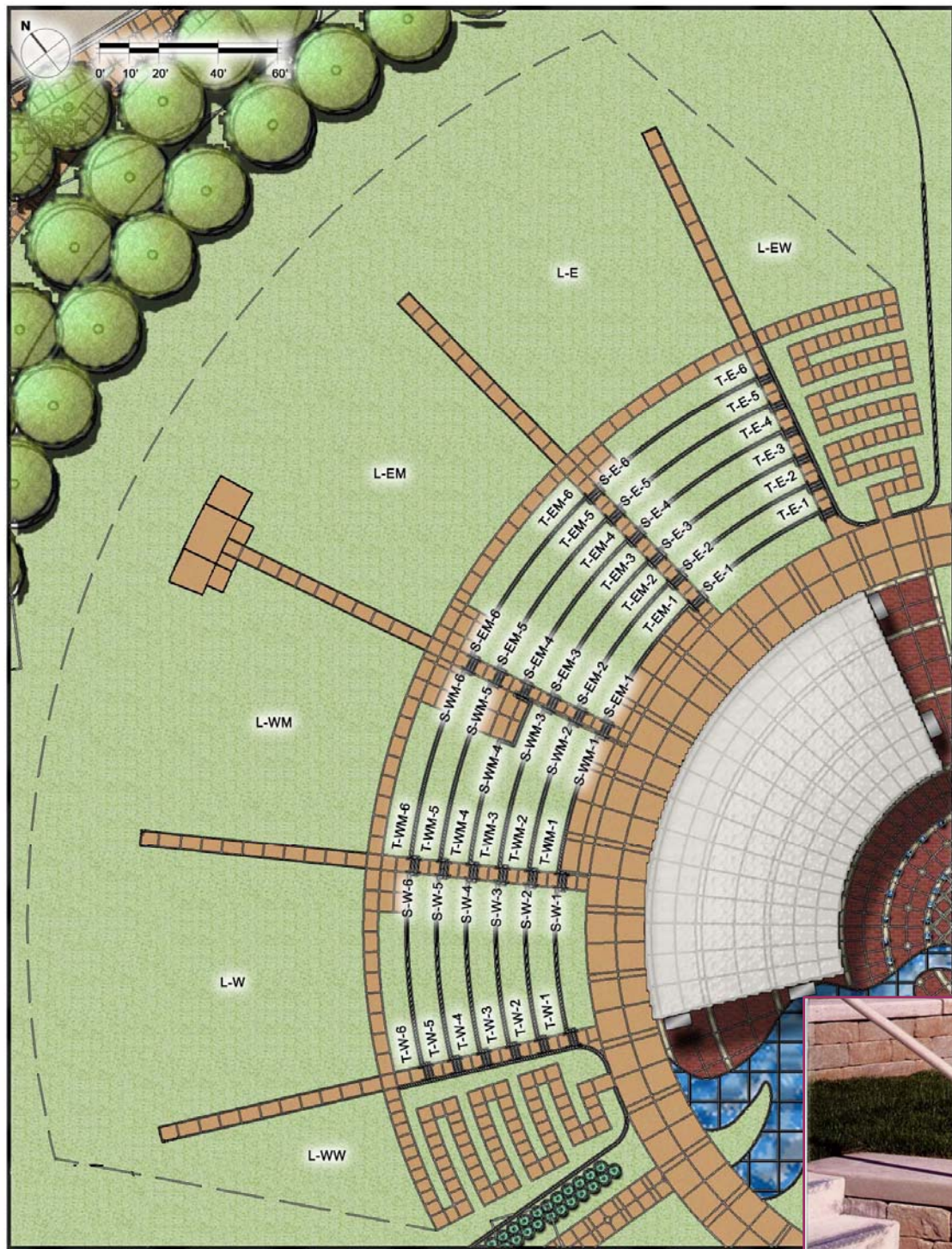
Pavilion Lights
4 - Emergency/House Lights,
Directed to Center Stage Controlled
from Electrical Pad (E)
8 - Up Lights, Mounted 2 per Column
Controlled from Electrical Pad (E)

Switch Control @ Electrical Pad E

- Switch 1: Front 2 Pavilion Up Lights
- Switch 2: Back 2 Pavilion Up Lights
- Switch 3: Front 2 Pavilion Up Lights
- Switch 4: Back 2 Pavilion Up Lights
- Switch 5: 2 Stage Down Lights
- Switch 6: 2 Stage Down Lights
- Switch 7: Stage Wall Lights
- Switch 8: Step Wall Lights
- Switch 9: Ramp Bollards
- Switch 10: Pole Mounted (House Lights)
- Switch 11: (not a switch)
- Switch 12: Photocell Override
- Switch 13: Pavilion Roof Outlets
- Switch 14: Pavilion Roof Outlets

Power Outage will Trigger Emergency Generator
Emergency/House Lights
Pavilion House Lights
Step Lights

Alton Amphitheater Electrical Features



Estimated Patron Distribution - Alton Amphitheater

Type & Location	Map Key	SF	LF	Assigned Criteria	# of Patrons
Lawn					
West Wing	L-WW	2,500		15.4 SF/Person	162
West	L-W	8,950		14.8 SF/Person	605
West Middle	L-WM	8,450		14.8 SF/Person	571
East Middle	L-EM	8,450		14.8 SF/Person	571
East	L-E	8,950		14.8 SF/Person	605
East Wing	L-EW	2,500		15.4 SF/Person	162

Subtotal Lawn 2,676

Terrace					
West	T-W-1	453		28.8 SF/Person	16
	T-W-2	483		28.8 SF/Person	17
	T-W-3	511		28.8 SF/Person	18
	T-W-4	542		28.8 SF/Person	19
	T-W-5	575		28.8 SF/Person	20
	T-W-6	500		28.8 SF/Person	17
West Middle	T-WM-1	453		28.8 SF/Person	16
	T-WM-2	483		28.8 SF/Person	17
	T-WM-3	386		28.8 SF/Person	13
	T-WM-4	374		28.8 SF/Person	13
	T-WM-5	575		28.8 SF/Person	20
	T-WM-6	500		28.8 SF/Person	17
East Middle	T-EM-1	453		28.8 SF/Person	16
	T-EM-2	483		28.8 SF/Person	17
	T-EM-3	511		28.8 SF/Person	18
	T-EM-4	542		28.8 SF/Person	19
	T-EM-5	575		28.8 SF/Person	20
	T-EM-6	500		28.8 SF/Person	17
East	T-E-1	453		28.8 SF/Person	16
	T-E-2	483		28.8 SF/Person	17
	T-E-3	511		28.8 SF/Person	18
	T-E-4	542		28.8 SF/Person	19
	T-E-5	575		28.8 SF/Person	20
	T-E-6	500		28.8 SF/Person	17

Subtotal Terrace 415

Seatwall					
West	S-W-1		47	1.5 LF/Person	31
	S-W-2		51	1.5 LF/Person	34
	S-W-3		54	1.5 LF/Person	36
	S-W-4		58	1.5 LF/Person	39
	S-W-5		61	1.5 LF/Person	41
	S-W-6		65	1.5 LF/Person	43
West Middle	S-WM-1		47	1.5 LF/Person	31
	S-WM-2		51	1.5 LF/Person	34
	S-WM-3		54	1.5 LF/Person	36
	S-WM-4		43	1.5 LF/Person	29
	S-WM-5		46	1.5 LF/Person	31
	S-WM-6		65	1.5 LF/Person	43
East Middle	S-EM-1		47	1.5 LF/Person	31
	S-EM-2		51	1.5 LF/Person	34
	S-EM-3		54	1.5 LF/Person	36
	S-EM-4		58	1.5 LF/Person	39
	S-EM-5		61	1.5 LF/Person	41
	S-EM-6		65	1.5 LF/Person	43
East	S-E-1		47	1.5 LF/Person	31
	S-E-2		51	1.5 LF/Person	34
	S-E-3		54	1.5 LF/Person	36
	S-E-4		58	1.5 LF/Person	39
	S-E-5		61	1.5 LF/Person	41
	S-E-6		65	1.5 LF/Person	43

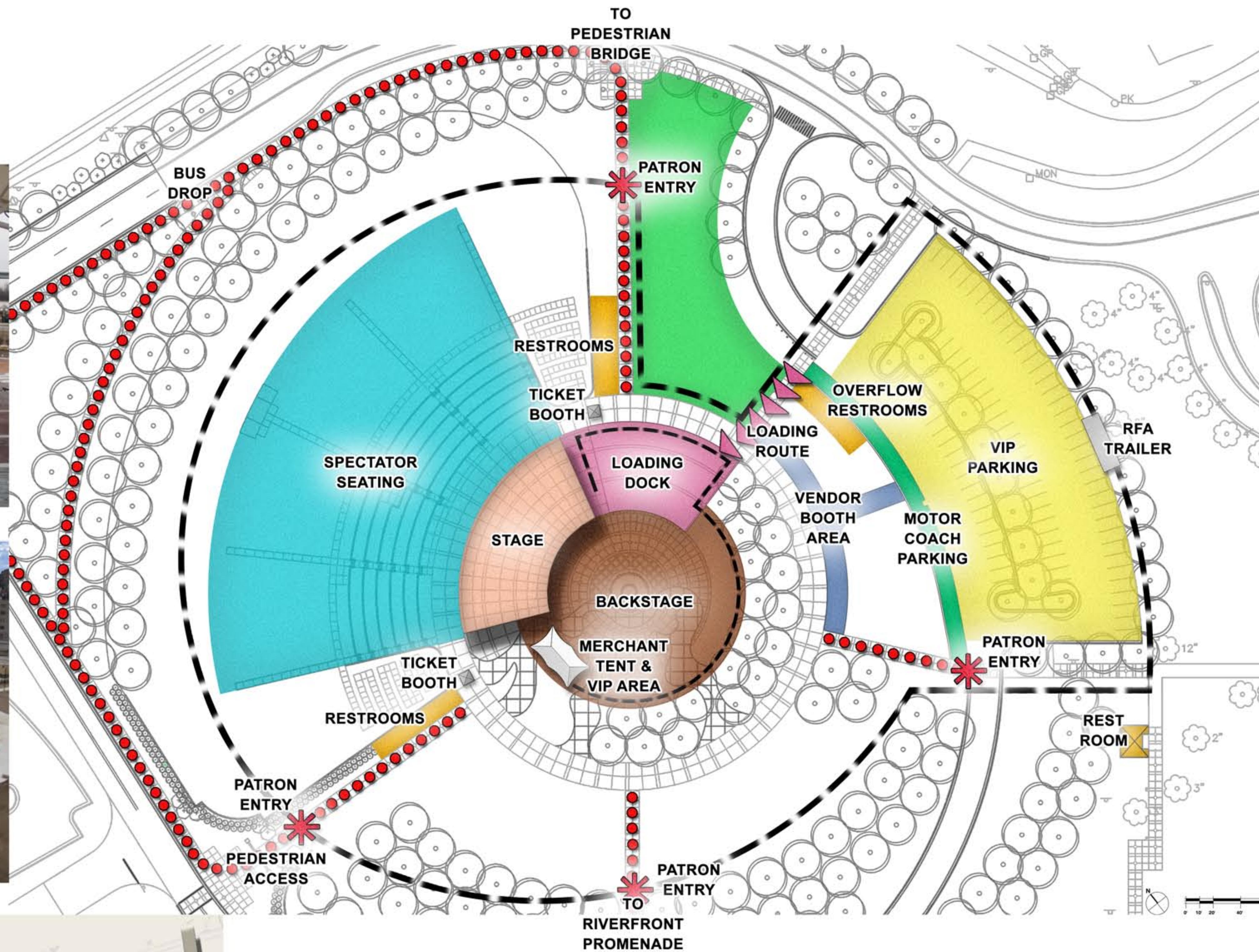
Subtotal Seatwall 876

Summary	
Subtotal Lawn	2,676
Subtotal Terrace	415
Subtotal Seatwall	876
Handicapped Seating	48

Total Estimated Patrons 4,015

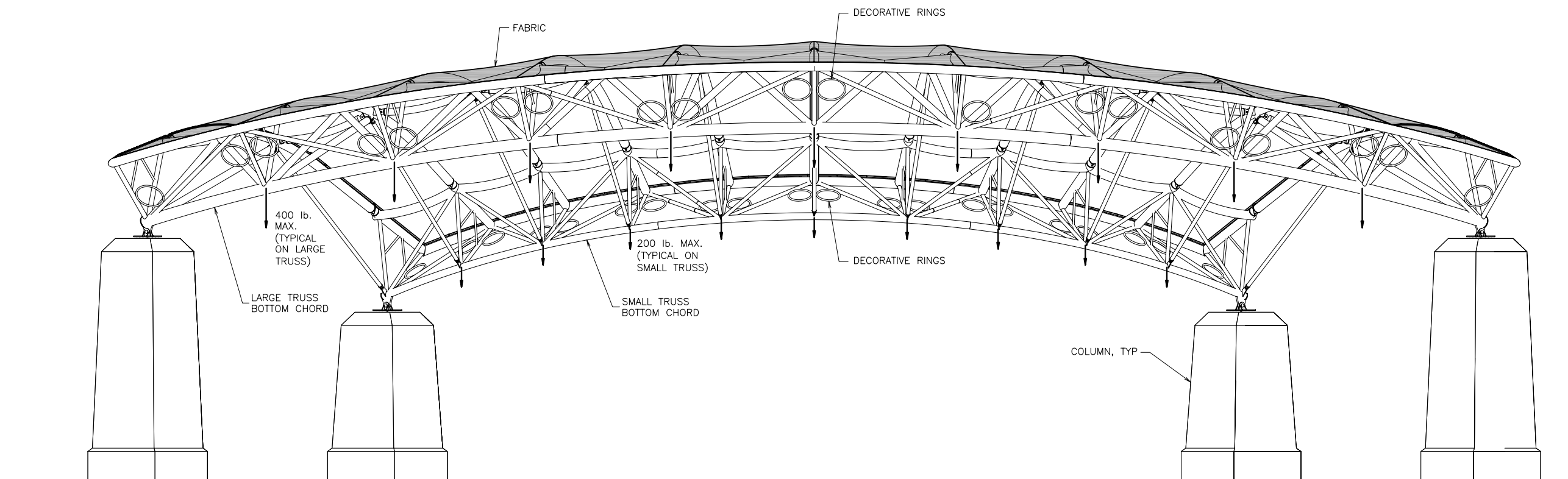
NOTE: The number of patrons is based on the estimated theoretical capacity yielded by the assigned criteria as stated in the above chart.

**Alton Amphitheater
Patron Distribution**



Alton Amphitheater Operations Diagram

May 2010




ELEVATION
SCALE: 3/16" = 1'-0"

NOTES:

1. LOADS SHOWN ARE TEMPORARY LIVE LOADS ASSOCIATED WITH STAGE LIGHTING, SOUND EQUIPMENT, ETC. "TEMPORARY LIVE LOADS" IMPLIES THAT THE LOADS ARE REMOVED WHEN NOT IN USE.
2. LOADS SHOWN ARE BASED ON LIVE LOADS PRESCRIBED IN THE CONTRACT DOCUMENTS, APPLIED ACCORDING TO THE PROVISIONS OF IBC 2003, AND AS RECOMMENDED BY THE ENGINEER OF RECORD.
3. THE LOADS SHOWN ARE VERTICAL. HORIZONTAL COMPONENTS OF LOADING UP TO 10% OF THE VERTICAL LOADS ARE PERMISSIBLE. LARGER HORIZONTAL LOADS SHALL BE SECURED BY OTHER MEANS AFTER HOISTING (I.E. STAGE LIGHTING TRUSS).
4. LOADING SHALL ONLY BE APPLIED AT THE NODE LOCATIONS SHOWN BY MEANS OF PASSIVE ATTACHMENT DEVICES WHICH WILL NOT DAMAGE OR CHANGE THE STRUCTURE OR ITS CORROSION PROTECTION IN ANY WAY (I.E. WELDING OF BRACKETS ON TO THE STRUCTURE SHALL NOT BE PERMITTED).
5. THE PASSIVE ATTACHMENT DEVICES SHALL NOT ATTACH TO THE DECORATIVE RINGS.

No attachment of any nature may be made to the pavilion structure without the written permission of the City of Alton. All permitted attachments shall not exceed the limits or conditions of the information contained on this illustration.

FOR YOUR RECORDS
Mar 17 2009

REV	DESCRIPTION	DATE	DRWN	CHKD	ENGR	
A	GENERAL REVISION	3/17/09	MJR	JAC	JAC	
REVISIONS						
NAME	DATE	 65 LAWRENCE BELL DRIVE AMHERST, N.Y. 14221, U.S.A. TELEPHONE: 716-633-9500 FAX: 716-633-9850				
DRAWN BY	MJR					2/20/09
CHECKED BY	JAC					2/20/09
ENGINEER	JAC					2/20/09
FINAL REVIEW						
SCALE	AS NOTED	DWG. NO.	07119 D 9001	REV	A	

TITLE
INTERFACE
TEMPORARY LIVE LOADS
ALTON RIVERFRONT DEVELOPMENT